



# INSTRUCTION BULLETIN

No. 9018919  
Machine: M17  
Published: 04-2021  
Rev. 00

**NOTE: DO NOT DISCARD the Parts List from the Instruction Bulletin. Place the Parts List in the appropriate place in the machine manual for future reference. Retaining the Parts List will make it easier to reorder individual parts and will save the cost of ordering an entire kit.**

*NOTE: Numbers in parenthesis ( ) are reference numbers for parts listed in Bill of Materials.*

Installation instructions for **kit number 9018833**

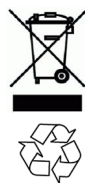
Kit installation must be performed by TennantTrue<sup>®</sup> service or an authorized service provider.

## SYNOPSIS:

This kit contains the parts needed to replace the direct throw sweep belt on M17 sweeper- scrubbers equipped with the direct throw sweeping assembly.  
Please follow step-by-step instructions.

## SPECIAL TOOLS / CONSIDERATIONS: NONE

(Estimated time to complete: 30 minutes)



### PROTECT THE ENVIRONMENT

Please dispose of packaging materials, used machine components such as batteries and fluids in an environmentally safe way according to local waste disposal regulations.

Always remember to recycle.

## PREPARATION:

1. If the sweeping main brush is not raised, turn on the machine. Completely raise the sweeping main brush. Turn off the machine, set the parking brake, and remove the key.

**FOR SAFETY: Before leaving or servicing machine, stop on level surface, turn off machine, set parking brake, and remove key.**

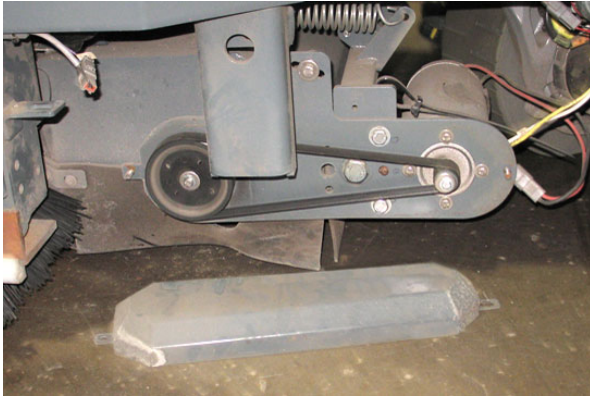
## INSTALLATION:

1. Remove the left brush panel from the sweep brush assembly. Set the left brush panel and all hardware aside. (Fig. 1)



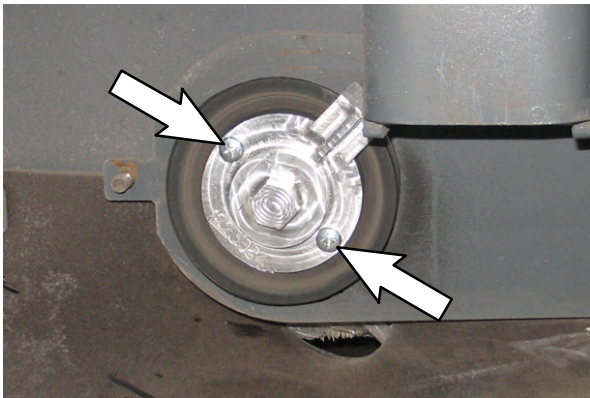
FIG. 1

2. Remove the belt cover from the sweep head. Set the belt cover and all hardware aside. (Fig. 2/Fig. 5)



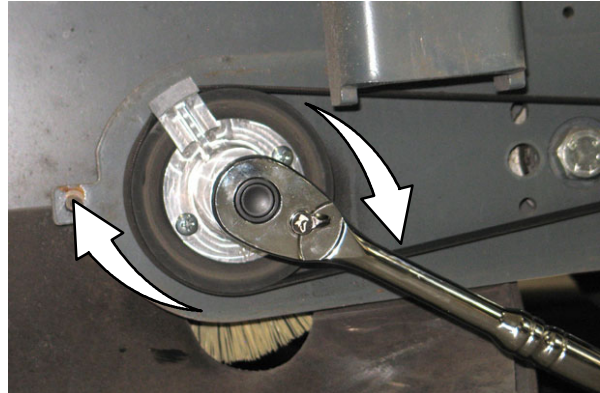
**FIG. 2**

3. Remove the sweep brush drive belt from the sweep head. Discard the sweep brush drive belt.
4. Use two M6 pan screws (3) to install belt installation tool (2) onto the large sweep brush sheave. (Fig. 3/Fig. 5)



**FIG. 3**

5. Position the new sweep brush drive belt (1) onto the small sweep brush sheave and then position the belt onto the belt installation tool (2) installed on the large sweep brush sheave.
6. Turn the belt installation tool (2)/sheave clockwise to install the belt onto both sheaves. (Fig. 4)

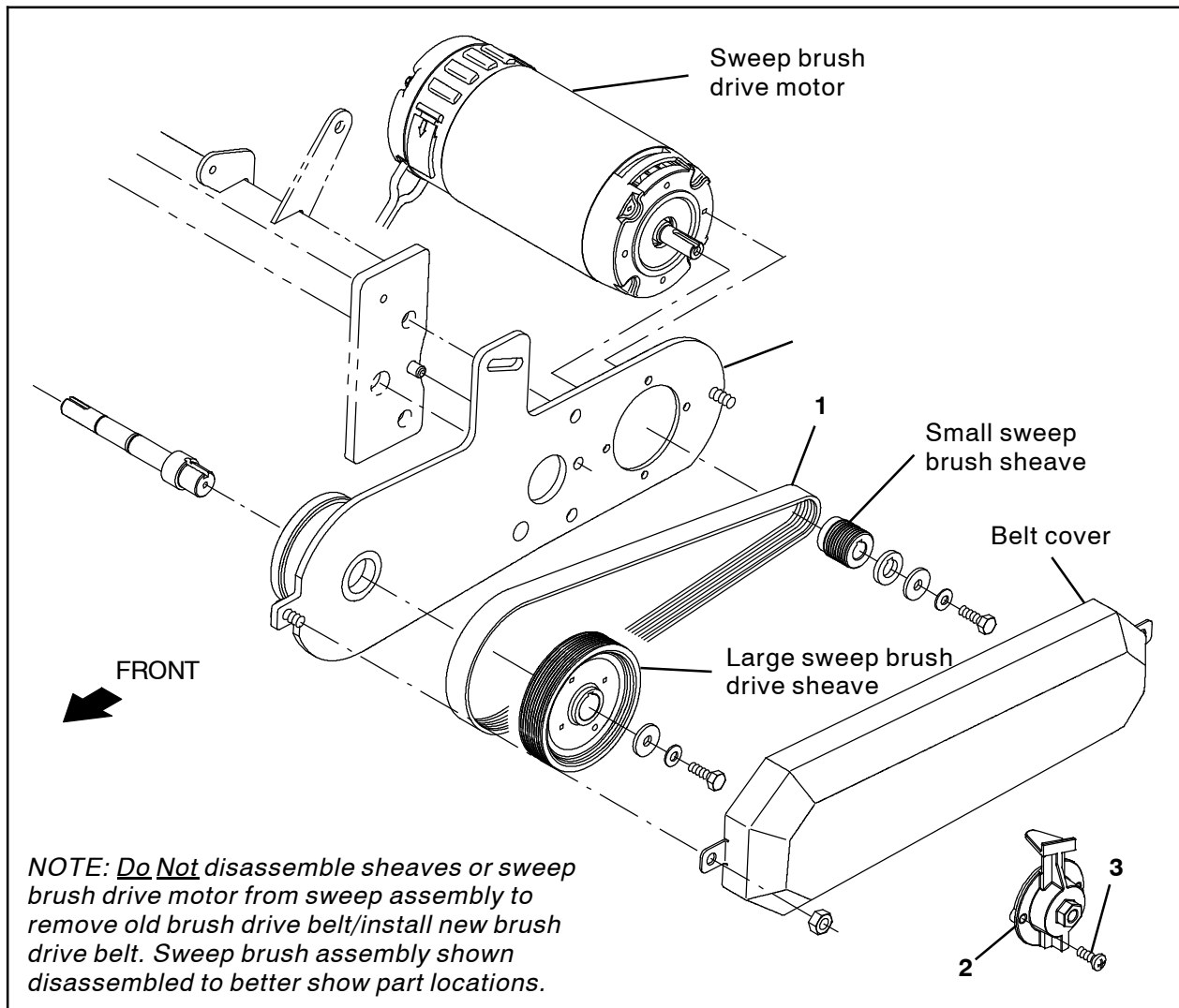


**FIG. 4**

7. Rotate the belt on the sheaves and use fingers to work the belt the rest of the way onto the sheaves.

*NOTE: Take care to not pinch fingers in the belt and the sheaves while rotating the belt onto the sheaves.*

8. Remove the belt installation tool from the sheave.
9. Turn on the machine. Observe the sweep brush drive belt while machine is in sweep mode. The belt should move smoothly on both sheaves. Turn the machine off and remove the key.
10. Reinstall the belt cover onto the machine.
11. Reinstall the left brush panel onto the machine.



**FIG. 5**

**Bill Of Materials For Belt Kit, Swp, Direct, Afmkt [M17] - 9018833**

| Ref. | Tennant<br>Part No. | Description                          | Qty. |
|------|---------------------|--------------------------------------|------|
| 1    | 1227083             | Belt, Ribbed, 822.5L [PJ823]         | 1    |
| 2    | 1223084             | Tool, Installation, Belt             | 1    |
| 3    | 09164               | Screw, Pan, Phl, M6 X 1.00 X 20, 4.8 | 2    |

**TENNANT COMPANY**  
P. O. Box 1452  
Minneapolis, MN 55440-1452